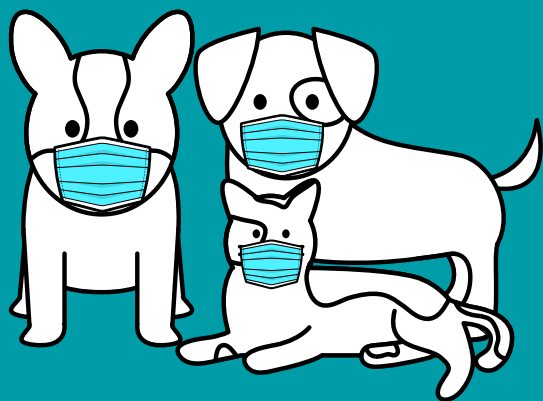


Thanks for being a member!

2020



Hindsight is 20/20

This year has been one that we'll not soon forget! Explore these helpful resources and discussions that kept members motivated in preserving the human-animal bond throughout (what felt like) the longest year ever.

Coronavirus/Covid-19 Resources

Fostering During Coronavirus Pandemic Group

This group was created to help various organizations find emergency fosters when shelters were forced to close their doors to the public.

Weekly Community Conversations

Maddie's Fund began hosting two weekly calls in March to support shelter and rescue workers, volunteers and animal welfare leaders through the changes brought on by the pandemic.

Coronavirus Related Discussions

Members were faced with new challenges due to the pandemic and supported each other on all things COVID-19.

[VIEW COVID-19 RESOURCES](#)



2020 Animal Welfare Playlists

Music can help us get through the toughest times. Staff, volunteers and executive leaders shared songs that kept our spirits high with this combined playlist.

[LISTEN NOW](#)

The Next Generation

We debuted an all new look and feel to Maddie's Pet Forum in the Fall! Be sure to watch the site tour & read the Getting Started Guide for more information about the refresh.

[LEARN MORE](#)



MADDIE'S[®]
Pet Forum