

# 8 Tips for Engagement on



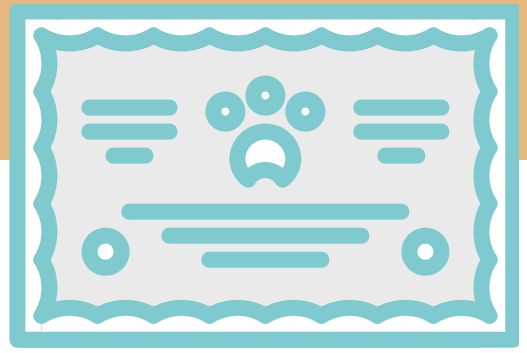
MADDIE'S®  
**Pet Forum**

Help build an innovative, diverse and inclusive online community by following these guidelines when participating on Maddie's® Pet Forum. If you have any questions or need assistance email [forumhelp@maddiesfund.org](mailto:forumhelp@maddiesfund.org).



## Be Positive & Solution Oriented

Maddie's® Pet Forum is a positive place of communication for all those who work & volunteer in animal care. While points of view may vary, please keep comments constructive and do not let a disagreement detract from the common good.



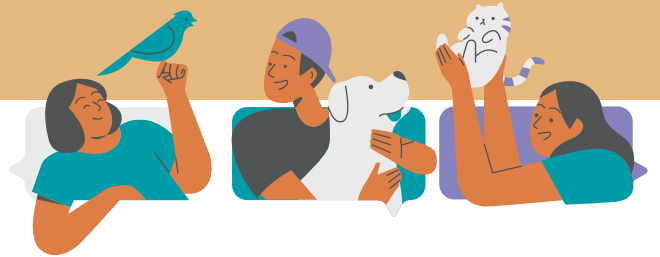
## Upload Resources & Files

If you have a digital resource that you're referencing, save time by uploading it directly to the discussion by selecting "Upload File". Files that get attached to discussions are also automatically uploaded to the Forum's Resource Center. It's a Win-Win-Win!



## Respect the Inbox

Since we encourage members to select the Real Time email setting, be mindful of member's inboxes. Instead of replying "Thanks" or "I agree", use the Like button to reduce inbox clutter & save the replies for thoughtful and intentional comments.



## Share Knowledge

Maddie's® Pet Forum was built to make it easier for everyone working in animal welfare organizations to do their jobs. When we share on the forum, we'll all have access to support, resources, and information to promote the physical & emotional well-being of staff, and the animals in our care.



## Challenges & Wins

Just like we encourage organizations to share happy adoptions or return to home stories, the forum is your place to share your successes. You never know how those wins can inspire others or how sharing challenges can spark innovation.



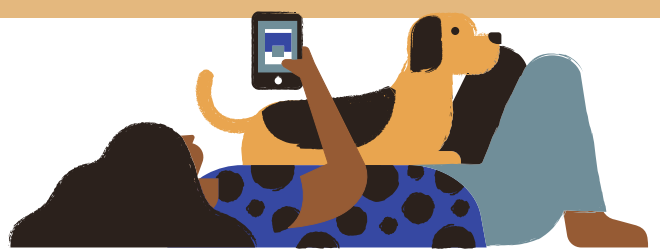
## Ask the Industry

Is there a question you've been getting all day long or a problem that you dealt with this week? Use the forum to get a pulse on what's going on in other organizations, ask for advice or get a fresh perspective.



## No Post Left Unanswered

While we encourage you to create new discussions, giving thoughtful responses to member questions is just as important as creating new discussions. Help members find answers to their questions by viewing the ["Posts without Replies"](#) page.



## Anonymous If You Like

An important feature of Maddie's® Pet Forum is the ability for members to engage in discussions as anonymous. This allows for members to talk freely about sensitive subjects without it being tied to them or their organization.