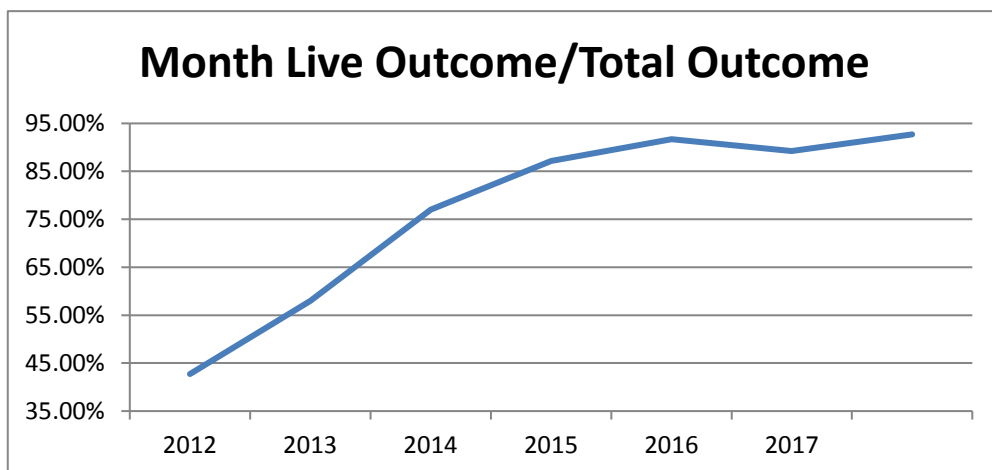


	Last Year DOG	Jan-17 CAT	TOTAL	Current DOG	Jan-18 CAT	TOTAL	Change
INTAKE							
Owner Surrender	193	83	276	123	92	215	-22.1%
Returns (adoption & rescue)	30	12	42	43	7	50	19.0%
Stray Over the Counter	247	244	491	200	226	426	-13.2%
Stray Impounded in Field	320	150	470	288	207	495	5.3%
Confiscated/Investigations	19	0	19	13	11	24	26.3%
Abandoned & Transferred In	0	0	0	0	0	0	*
Born in Shelter	0	0	0	11	0	11	100.0%
LIVE INTAKE	809	489	1,298	678	543	1,221	-5.9%
Returned in from Foster Care				34	128	162	
Sent out to Foster Care				33	26	59	
Net Change in Shelter Pop.				1	102	103	
OUTCOME							
Adoption	428	207	635	378	243	621	-2.2%
Adoption to Rescue/Rehome				33	145	178	*
Returned to Owner	133	11	144	97	12	109	-24.3%
Transfer to HSTB	70	6	76	123	32	155	103.9%
Sent to Rescue	71	215	286	14	97	111	-61.2%
Community Cat Returns		104	104		111	111	6.7%
Total Live Outcome	702	543	1,245	645	640	1,285	3.2%
Died in Custody/Transport	4	11	15	3	4	7	-53.3%
Euthanasia	61	74	135	55	39	94	-30.4%
Lost/Missing/Unaccounted For	0	0	0	0	0	0	*
Non-Live Outcome	65	85	150	58	43	101	-32.7%
TOTAL OUTCOME	767	628	1,395	703	683	1,386	-0.6%
Total Live Out/Total Out	91.53%	86.46%	89.25%	91.75%	93.70%	92.71%	
HSTB Kept Strays				111	61	172	
Monthly Comparisons	2012	2013	2014	2015	2016	2017	2018
Live Outcome/Total Outcome	42.73%	57.98%	77.02%	87.18%	91.71%	89.25%	92.71%



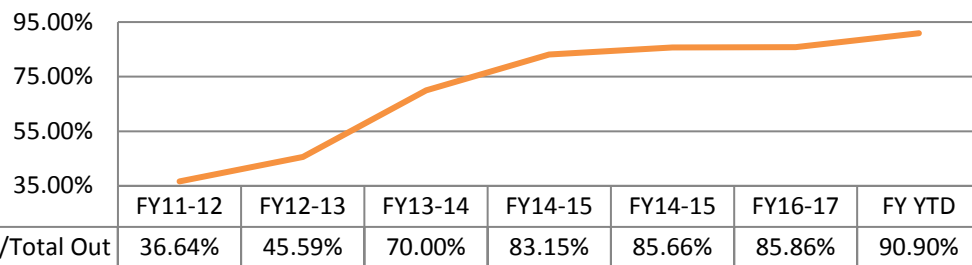
October 1st thru January 31st

	FY16-17			FY17-18			Change
	DOG	CAT	TOTAL	DOG	CAT	TOTAL	
INTAKE							
Owner Surrender	730	486	1,216	521	434	955	-21.5%
Returns	112	41	153	131	38	169	10.5%
Stray Over the Counter	984	1,469	2,453	747	1,290	2,037	-17.0%
Stray Impounded in Field	1,074	589	1,663	1,135	835	1,970	18.5%
Confiscated/Investigations	78	1	79	89	57	146	84.8%
Abandoned & Transferred In	0	1	1	1	0	1	0.0%
Born in Shelter	0	0	0	18	4	22	100.0%
LIVE INTAKE	2,978	2,587	5,565	2,642	2,658	5,300	-4.8%
OUTCOME							
Adoption	1,701	1,198	2,899	1,495	1,435	2,930	1.1%
Returned to Owner	453	43	496	356	40	396	-20.2%
Transfer HSTB	317	134	451	522	62	584	29.5%
Sent to Rescue	239	914	1,153	221	830	1,051	-8.8%
Community Cat Returns		314	314		465	465	48.1%
Total Live Outcome	2,710	2,603	5,313	2,594	2,832	5,426	2.1%
Died in Custody, Foster, Offsite	9	54	63	11	72	83	31.7%
Euthanasia	254	431	685	172	288	460	-32.8%
Lost/Missing/Unaccounted For	0	0	0	0	0	0	*
Non-Live Outcome	263	485	748	183	360	543	-27.4%
TOTAL OUTCOME	2,973	3,088	6,061	2,777	3,192	5,969	-1.5%
Total Live Out/Total Out	91.15%	84.29%	87.66%	93.41%	88.72%	90.90%	

HSTB Kept Strays				369	311	680
------------------	--	--	--	-----	-----	-----

FY Totals (Current FY is YTD)	FY11-12	FY12-13	FY13-14	FY14-15	FY15-16	FY16-17	FY YTD
Total Live Intake	20,099	21,493	16,893	14,778	15,620	18,481	5,300
Live Outcome	7,340	10,021	11,707	12,833	12,917	16,058	5,426
Non Live Outcome	12,691	11,960	5,017	2,600	2,163	2,645	543
Total Outcome	20,031	21,981	16,724	15,433	15,080	18,703	5,969
	FY11-12	FY12-13	FY13-14	FY14-15	FY14-15	FY16-17	FY YTD
Total Live Out/Total Out	36.64%	45.59%	70.00%	83.15%	85.66%	85.86%	90.90%

Total Live Out/Total Out (FY Overall)



Affordable Sterilization Vouchers

	Redeemed	Issued
Oct-17	380	670
Nov-17	641	588
Dec-17	443	376
Jan-18	496	525
Feb-18		
Mar-18		
Apr-18		
May-18		
Jun-18		
Jul-18		
Aug-18		
Sep-18		
FY Totals	1,960	2,159

License Tag Sales

	FY14-15	FY15-16	FY16-17	FY17-18
October	\$144,685	\$116,482	\$116,985	\$164,556
November	\$108,896	\$130,315	\$136,977	\$182,802
December	\$149,347	\$162,215	\$154,211	\$145,078
January	\$135,602	\$96,636	\$158,793	\$178,753
February	\$149,452	\$129,493	\$109,638	
March	\$189,842	\$166,242	\$184,382	
April	\$149,040	\$148,546	\$154,458	
May	\$161,296	\$168,534	\$176,606	
June	\$175,953	\$137,223	\$146,250	
July	\$122,197	\$118,009	\$159,902	
August	\$69,040	\$162,870	\$252,675	
September	\$222,404	\$150,039	\$158,507	
FY Totals	\$1,777,754	\$1,686,604	\$1,909,384	\$671,189

* Current monthly figures are pre-verification with Clerk (may be adjusted)